



Cable ID: 27

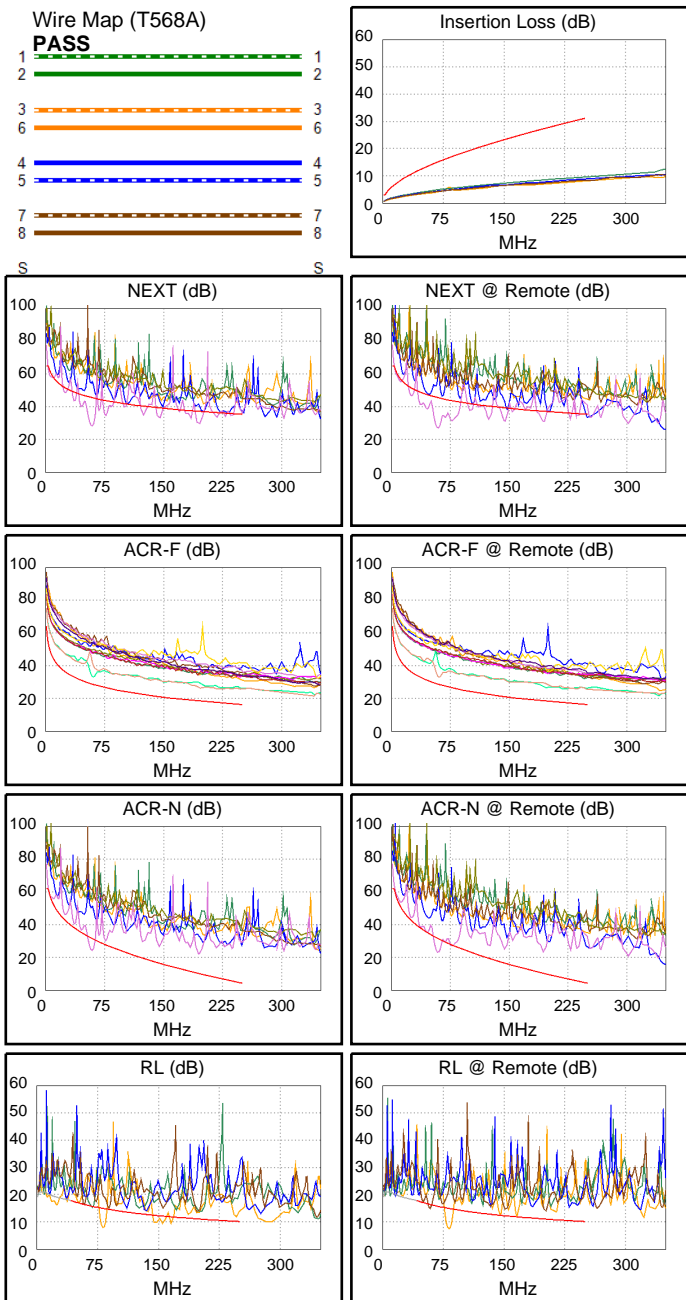
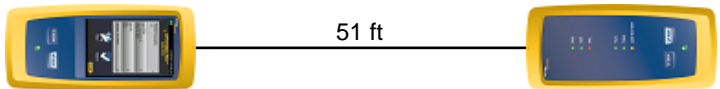
Date / Time: 09/15/2017 06:53:41 PM
Headroom -18.5 dB (NEXT 45-78)
Test Limit: TIA Cat 6 Perm. Link
 Cable Type: Cat 6 U/UTP
 NVP: 69.0%

Operator: CLEBER
 Software Version: V3.0 Build 6
 Limits Version: V3.0
 Calibration Date:
 Main (Module): 06/06/2013
 Remote (Module): 06/04/2013

Test Summary: FAIL

Model: DSX-5000
 Main S/N: 2420012
 Remote S/N: 2420016
 Main Adapter: DSX-PLA004
 Remote Adapter: DSX-PLA004

Length (ft), Limit 295	[Pair 45]	51
Prop. Delay (ns), Limit 498	[Pair 36]	77
Delay Skew (ns), Limit 44	[Pair 36]	2
Resistance (ohms)	[Pair 45]	7.2
Insertion Loss Margin (dB)	[Pair 36]	21.0
Frequency (MHz)	[Pair 36]	242.5
Limit (dB)	[Pair 36]	30.6



	Worst Case Margin		Worst Case Value	
FAIL	MAIN	SR	MAIN	SR
Worst Pair	45-78	45-78	45-78	45-78
NEXT (dB)	-17.3F	-18.5F	-17.2	-18.4
Freq. (MHz)	58.8	58.8	59.3	59.5
Limit (dB)	45.6	45.6	45.5	45.5
Worst Pair	45	45	45	45
PS NEXT (dB)	-14.8F	-16.0F	-14.7	-15.9
Freq. (MHz)	59.0	59.0	59.3	59.5
Limit (dB)	43.1	43.1	43.0	43.0
PASS	MAIN	SR	MAIN	SR
Worst Pair	45-78	78-45	78-45	78-45
ACR-F (dB)	4.5	4.4	8.2	9.4
Freq. (MHz)	60.5	60.5	219.0	250.0
Limit (dB)	28.6	28.6	17.4	16.2
Worst Pair	78	45	45	45
PS ACR-F (dB)	7.5	7.1	11.2	11.2
Freq. (MHz)	60.5	60.5	247.0	250.0
Limit (dB)	25.6	25.6	13.3	13.2
N/A	MAIN	SR	MAIN	SR
Worst Pair	45-78	45-78	45-78	45-78
ACR-N (dB)	-7.4	-8.6	11.9	-8.4
Freq. (MHz)	58.8	58.8	195.0	59.5
Limit (dB)	31.7	31.7	10.1	31.5
Worst Pair	45	45	78	45
PS ACR-N (dB)	-5.0	-6.2	14.1	-6.0
Freq. (MHz)	58.8	58.8	195.0	59.5
Limit (dB)	29.2	29.2	7.5	29.0
FAIL	MAIN	SR	MAIN	SR
Worst Pair	12	12	12	12
RL (dB)	-7.2F	-7.5F	-7.2	-7.4
Freq. (MHz)	82.0	82.0	82.0	82.5
Limit (dB)	14.9	14.9	14.9	14.8