



Cable ID: 23

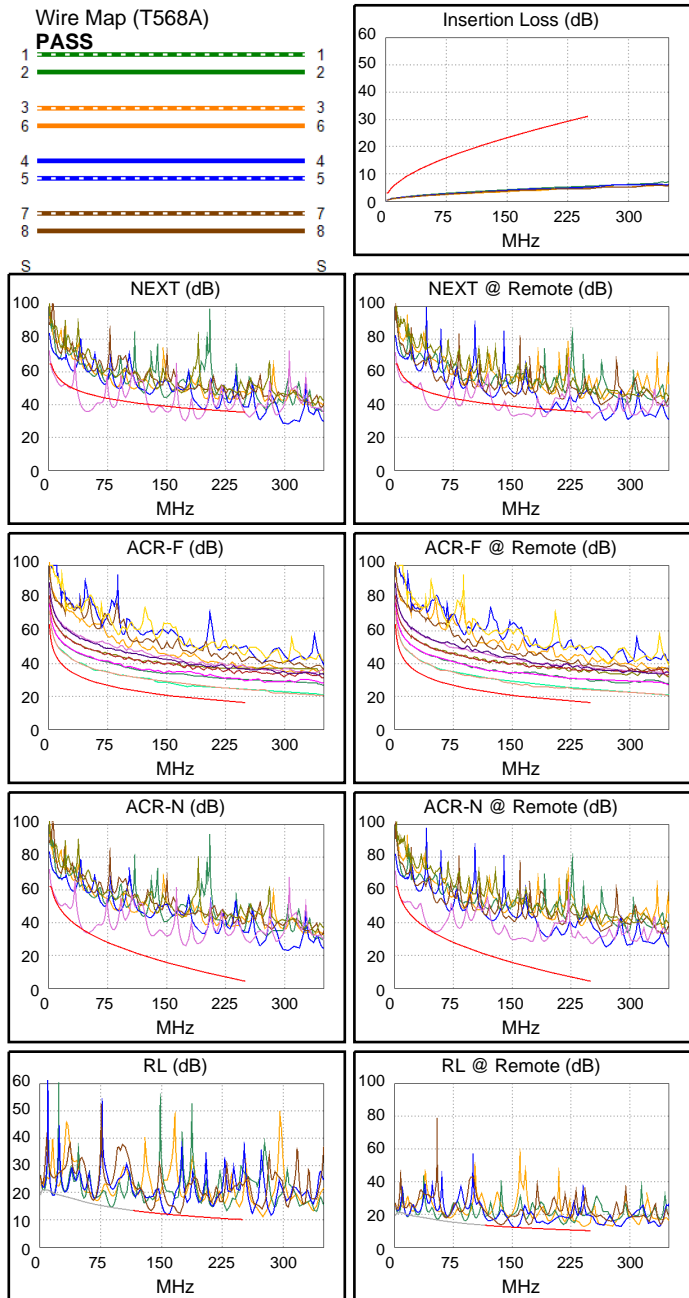
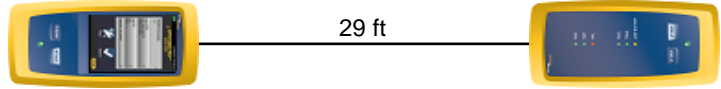
Date / Time: 09/15/2017 06:48:00 PM
Headroom -11.1 dB (NEXT 45-78)
Test Limit: TIA Cat 6 Perm. Link
 Cable Type: Cat 6 U/UTP
 NVP: 69.0%

Operator: CLEBER
 Software Version: V3.0 Build 6
 Limits Version: V3.0
 Calibration Date:
 Main (Module): 06/06/2013
 Remote (Module): 06/04/2013

Test Summary: FAIL

Model: DSX-5000
 Main S/N: 2420012
 Remote S/N: 2420016
 Main Adapter: DSX-PLA004
 Remote Adapter: DSX-PLA004

Length (ft), Limit 295	[Pair 12]	29
Prop. Delay (ns), Limit 498	[Pair 36]	43
Delay Skew (ns), Limit 44	[Pair 36]	1
Resistance (ohms)	[Pair 36]	3.9
Insertion Loss Margin (dB)	[Pair 36]	24.1
Frequency (MHz)	[Pair 36]	232.5
Limit (dB)	[Pair 36]	29.8



Worst Case Margin Worst Case Value

FAIL	MAIN	SR	MAIN	SR
Worst Pair	45-78	45-78	45-78	45-78
NEXT (dB)	-11.1 F	-9.9 F	-7.7	-3.2
Freq. (MHz)	48.3	52.5	174.0	250.0
Limit (dB)	47.0	46.4	37.9	35.3
Worst Pair	45	45	78	78
PS NEXT (dB)	-8.7 F	-7.6 F	-5.4	-3.7
Freq. (MHz)	47.8	51.3	173.0	192.0
Limit (dB)	44.6	44.1	35.4	34.6

PASS	MAIN	SR	MAIN	SR
Worst Pair	45-78	78-45	78-45	78-45
ACR-F (dB)	6.7	6.6	7.8	7.7
Freq. (MHz)	176.5	178.5	249.5	250.0
Limit (dB)	19.3	19.2	16.2	16.2
Worst Pair	45	45	45	45
PS ACR-F (dB)	9.0	8.9	9.6	9.4
Freq. (MHz)	188.5	178.5	250.0	250.0
Limit (dB)	15.7	16.2	13.2	13.2

N/A	MAIN	SR	MAIN	SR
Worst Pair	45-78	45-78	45-78	45-78
ACR-N (dB)	-0.7	-0.1	13.1	23.4
Freq. (MHz)	46.0	6.3	173.5	250.0
Limit (dB)	35.1	56.7	12.7	4.2
Worst Pair	45	78	78	45
PS ACR-N (dB)	1.7	2.0	15.4	25.3
Freq. (MHz)	46.8	4.0	173.0	250.0
Limit (dB)	32.4	58.3	10.2	1.6

FAIL	MAIN	SR	MAIN	SR
Worst Pair	45	45	45	45
RL (dB)	-0.3 F	-0.2 F	-0.2	-0.2
Freq. (MHz)	156.5	155.0	158.0	155.0
Limit (dB)	12.1	12.1	12.0	12.1