



Cable ID: 24

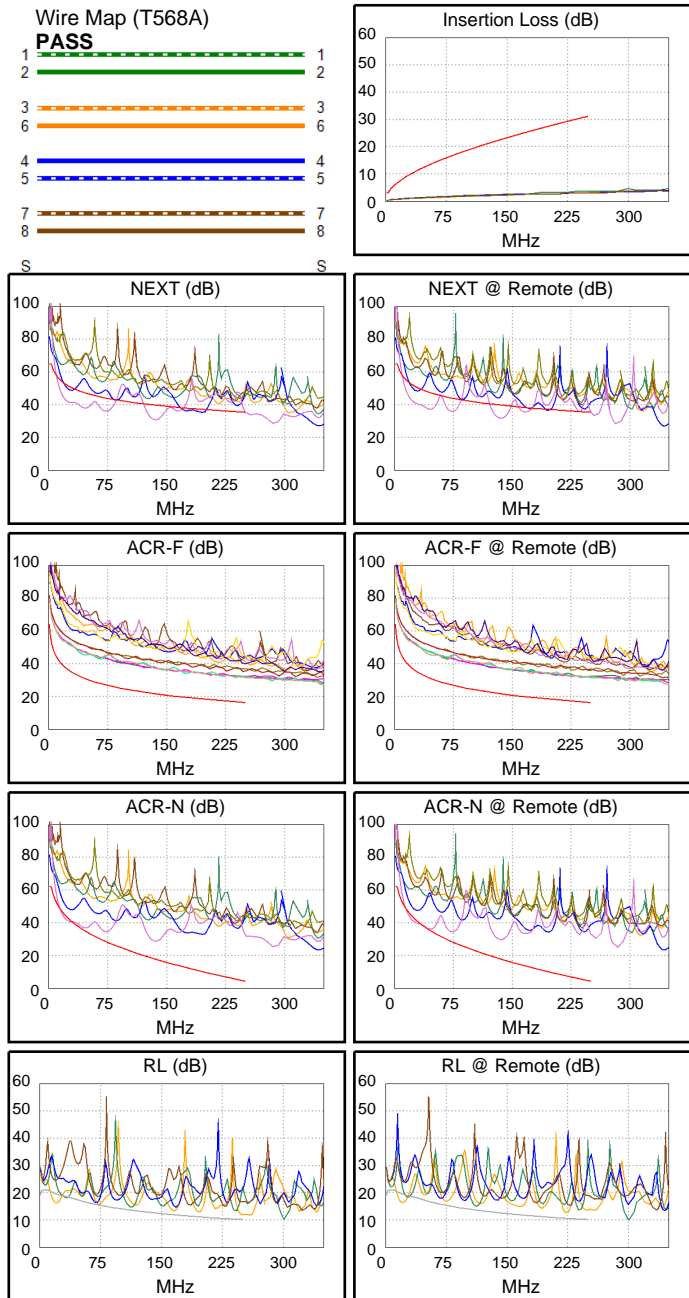
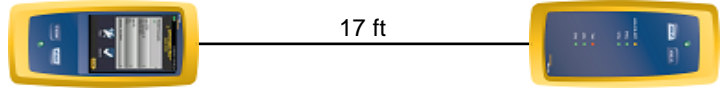
Date / Time: 09/15/2017 06:50:28 PM
Headroom -10.4 dB (NEXT 45-78)
Test Limit: TIA Cat 6 Perm. Link
 Cable Type: Cat 6 U/UTP
 NVP: 69.0%

Operator: CLEBER
 Software Version: V3.0 Build 6
 Limits Version: V3.0
 Calibration Date:
 Main (Module): 06/06/2013
 Remote (Module): 06/04/2013

Test Summary: FAIL

Model: DSX-5000
 Main S/N: 2420012
 Remote S/N: 2420016
 Main Adapter: DSX-PLA004
 Remote Adapter: DSX-PLA004

Length (ft), Limit 295	[Pair 45]	17
Prop. Delay (ns), Limit 498	[Pair 36]	26
Delay Skew (ns), Limit 44	[Pair 12]	1
Resistance (ohms)	[Pair 36]	2.4
Insertion Loss Margin (dB)	[Pair 36]	26.7
Frequency (MHz)	[Pair 36]	241.0
Limit (dB)	[Pair 36]	30.4



	Worst Case Margin		Worst Case Value	
FAIL	MAIN	SR	MAIN	SR
Worst Pair	45-78	45-78	45-78	45-78
NEXT (dB)	-9.8 F	-10.4 F	-8.9	-7.8
Freq. (MHz)	24.9	43.0	136.5	137.0
Limit (dB)	51.6	47.8	39.6	39.6
Worst Pair	78	78	45	78
PS NEXT (dB)	-8.1 F	-8.4 F	-6.5	-5.4
Freq. (MHz)	24.5	26.3	136.5	137.0
Limit (dB)	49.3	48.8	37.1	37.0
PASS	MAIN	SR	MAIN	SR
Worst Pair	45-78	78-45	45-78	78-45
ACR-F (dB)	14.3	14.3	14.9	14.9
Freq. (MHz)	43.8	43.8	239.5	239.5
Limit (dB)	31.4	31.4	16.6	16.6
Worst Pair	45	45	45	45
PS ACR-F (dB)	14.3	14.3	14.9	15.1
Freq. (MHz)	1.3	1.4	250.0	250.0
Limit (dB)	59.3	58.4	13.2	13.2
N/A	MAIN	SR	MAIN	SR
Worst Pair	45-78	45-78	45-78	45-78
ACR-N (dB)	-2.2	-2.4	11.0	12.2
Freq. (MHz)	21.9	21.1	136.5	137.0
Limit (dB)	44.2	44.6	17.6	17.5
Worst Pair	78	78	45	78
PS ACR-N (dB)	-0.4	-0.6	13.4	14.6
Freq. (MHz)	21.9	21.1	136.5	137.0
Limit (dB)	41.8	42.2	15.0	14.9
PASS	MAIN	SR	MAIN	SR
Worst Pair	12	12	12	12
RL (dB)	2.6	2.7	2.6	2.7
Freq. (MHz)	245.5	226.5	245.5	226.5
Limit (dB)	10.1	10.4	10.1	10.4